

NORTHWEST CORNER OF THE E 1/2 OF THE SE 1/4 OF SEC. 18, TWP. 22 S. RG. 24 E.

NORTHEAST CORNER OF SW 1/4 OF SEC. 17, TWP. 22 S. RG. 24 E.

NORTHWEST CORNER OF THE S 1/2 OF THE SE 1/4 OF SEC. 17, TWP. 22 S. RG. 24 E.

NORTHEAST CORNER OF THE S 1/2 OF THE SE 1/4 OF SEC. 17, TWP. 22 S. RG. 24 E.

NORTHWEST CORNER OF THE NE 1/4 OF SEC. 19, TWP. 22 S. RG. 24 E.

SOUTHWEST CORNER OF THE E 1/2 OF THE SE 1/4 OF SEC. 19, TWP. 22 S. RG. 24 E.

NORTHEAST CORNER OF THE NW 1/4 OF THE SE 1/4 OF SEC. 20, TWP. 22 S. RG. 24 E.

SOUTHWEST CORNER OF THE NE 1/4 OF SEC. 20, TWP. 22 S. RG. 24 E.

NORTHEAST CORNER OF THE SW 1/4 OF THE SW 1/4 OF SEC. 20, TWP. 22 S. RG. 24 E.

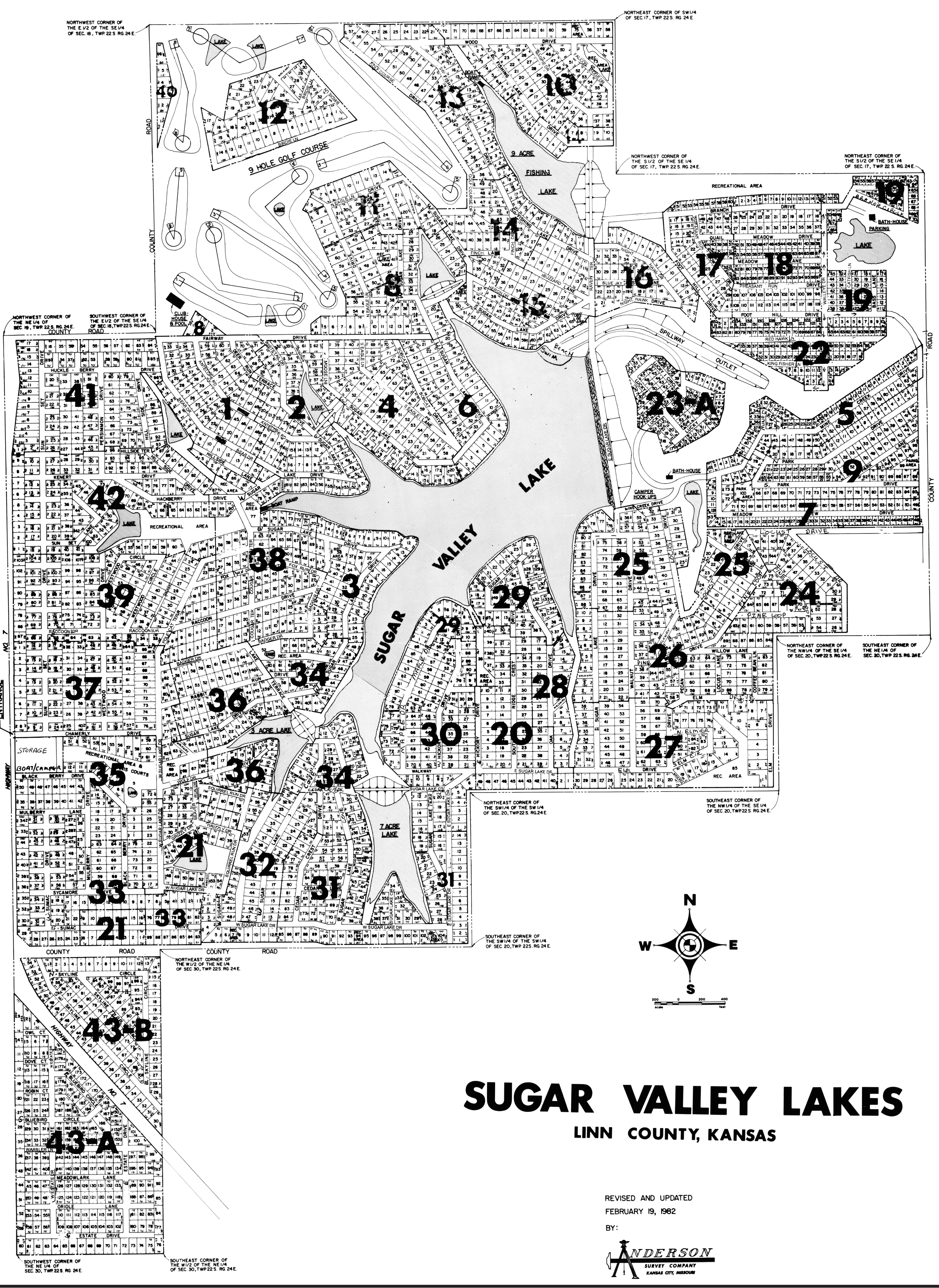
SOUTHWEST CORNER OF THE NW 1/4 OF THE SE 1/4 OF SEC. 20, TWP. 22 S. RG. 24 E.

SOUTHWEST CORNER OF THE SW 1/4 OF THE SW 1/4 OF SEC. 20, TWP. 22 S. RG. 24 E.

NORTHEAST CORNER OF THE W 1/2 OF THE NE 1/4 OF SEC. 30, TWP. 22 S. RG. 24 E.

SOUTHWEST CORNER OF THE NE 1/4 OF SEC. 30, TWP. 22 S. RG. 24 E.

SOUTHWEST CORNER OF THE W 1/2 OF THE NE 1/4 OF SEC. 30, TWP. 22 S. RG. 24 E.



SUGAR VALLEY LAKES

LINN COUNTY, KANSAS

REVISED AND UPDATED
FEBRUARY 19, 1982

BY:
ANDERSON
SURVEY COMPANY
KANSAS CITY, MISSOURI